

The State of Primary Care Physician Workforce: New Hampshire

Background

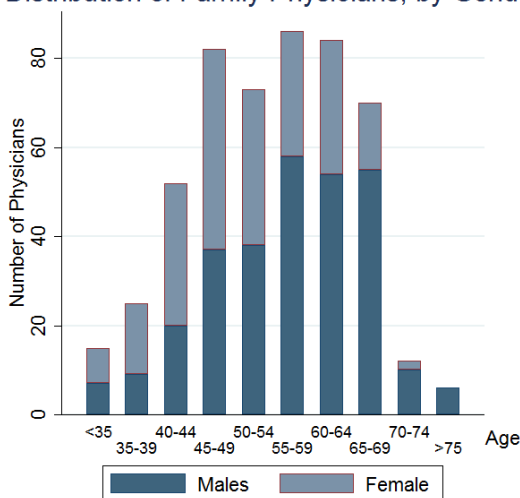
In the United States, primary care physicians (PCPs) currently represent less than one-third of the total physician workforce.¹ States are under increasing pressure to create solutions that bolster the number of physicians practicing primary care in both rural and urban settings.² This factsheet characterizes the primary care physician workforce in New Hampshire.

We used data mainly from the 2018 American Medical Association (AMA) Physician Masterfile. Physicians were classified as primary care if their primary specialty is family medicine, internal medicine, pediatrics, general practice or geriatrics. We restricted our counts to PCPs in direct patient care. With Centers for Medicare and Medicaid Services data, we identified PCPs that work mainly as hospitalists and excluded them from our analysis. Finally, we used additional data sources to identify osteopaths excluded from the AMA Masterfile.

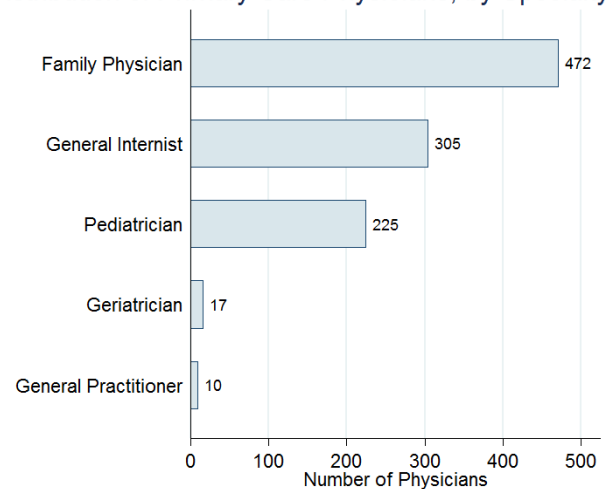
Current Workforce

In 2018, New Hampshire had 1,029 PCPs in direct patient care, of which 472 were family physicians. In other words, 46% of its primary care workforce consisted of family physicians, compared to 26% in the New England Census Division and 38% nationwide. On a per capita basis, there were about 77 PCPs per 100,000 persons in New Hampshire, compared to 98 per 100,000 in the New England and 76 per 100,000 in the U.S. as a whole. The state's family medicine workforce was 47% female, which was more than the percentage nationwide (45%). Consistent with national trends, younger family physicians were more likely to be female than their older counterparts. About 46% of family physicians were over the age of 55, more than the nationwide percentage of 44%.

Age Distribution of Family Physicians, by Gender



Distribution of Primary Care Physicians, by Specialty



	New Hampshire	New England*	Nation
Characteristics of Family Physicians and PCPs			
Percent over 55 Years (PCP)	46	46	44
Percent Female (FP)	47	51	45
Percent Osteopaths (FP)	14	8	12
Percent International Medical School Graduates (FP)	7	9	12
Distribution of PCPs			
Percent Total State Population Rural	37	12	14
Percent Family Physicians Rural	46	20	14
Percent Total State Population in Underserved County**	0	1	18

*US Census Bureau New England Census Division States: CT, ME, MA, NH, RI, VT

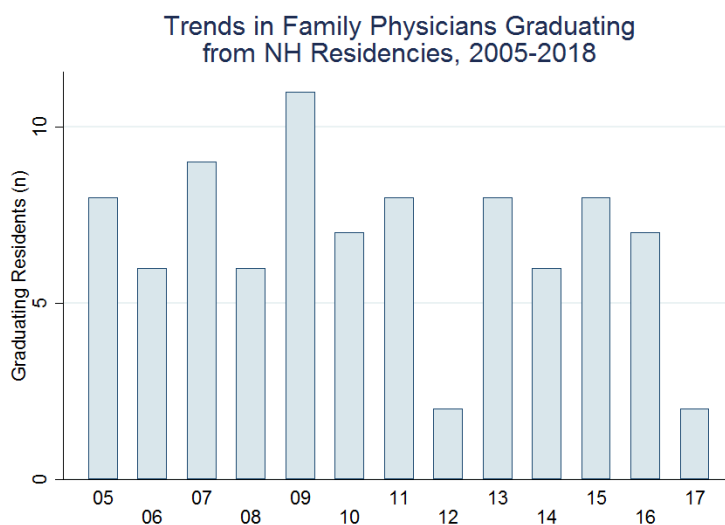
**Underserved counties had a population to PCP ratio greater than 2,000:1.

In 2018, about 7% of family physicians in the state were international medical school graduates and 14% were trained as osteopaths. While 37% of New Hampshire’s population lived in rural counties, 46% of family physicians work in these counties. None of New Hampshire’s residents live in underserved counties with more than 2,000 persons per PCP.

Future Workforce

Evidence indicates that physicians are more likely to practice in the state in which they completed residency.³ National PCP deficits have stimulated the growth of in-state residency programs to replenish the aging generation of physicians leaving the workforce. Understanding current primary care residency programs can help New Hampshire assess its future primary care workforce to meet the health care needs of its population.

There is just one family medicine residency training program in New Hampshire. Nationally, the number of family physicians graduating from the Accreditation Council for Graduate Medical Education-accredited programs declined from 3,225 in 2005 to 2,970 in 2012, then increased to 3,383 by 2017. Trends for New Hampshire over the same period are shown in the adjacent figure.



Between 2011 and 2017, the state produced a total of 42 family physicians; of these, 14 (33%) stayed in-state. The loss of state-trained family physicians is offset by the in-migration of 39 family physicians trained in other states. Through elevated support of family medicine residency programs, New Hampshire can work to replenish the PCP pipeline practicing in local communities.

Published December 2018. More details about our methods are available at <https://www.graham-center.org/content/dam/rgc/documents/maps-data-tools/maps-methodology/state-pc-physician-workforce-methodology.pdf>.

Suggested Citation: Stephen Petterson, Elizabeth Wilkinson, A.C. Kessler, Courtney Stone, Andrew Bazemore. *The State of Primary Care Physician Workforce*. Washington, D.C.: The Robert Graham Center, 2018.

1. American Medical Association (AMA). AMA Physician Masterfile. <https://www.ama-assn.org/life-career/ama-physician-masterfile>. Accessed July 20, 2018.
2. Petterson S, McNellis R, Klink K, Meyers D, Bazemore A. *The State of Primary Care in the United States: A Chartbook of Facts and Statistics*. January 2018.
3. Health Resources and Services Administration Bureau of Health. *State-Level Projections of Supply and Demand for Primary Care Practitioners: 2013-2025*. November 2016. <https://bhw.hrsa.gov/sites/default/files/bhw/health-workforce-analysis/research/projections/primary-care-state-projections2013-2025.pdf>.