

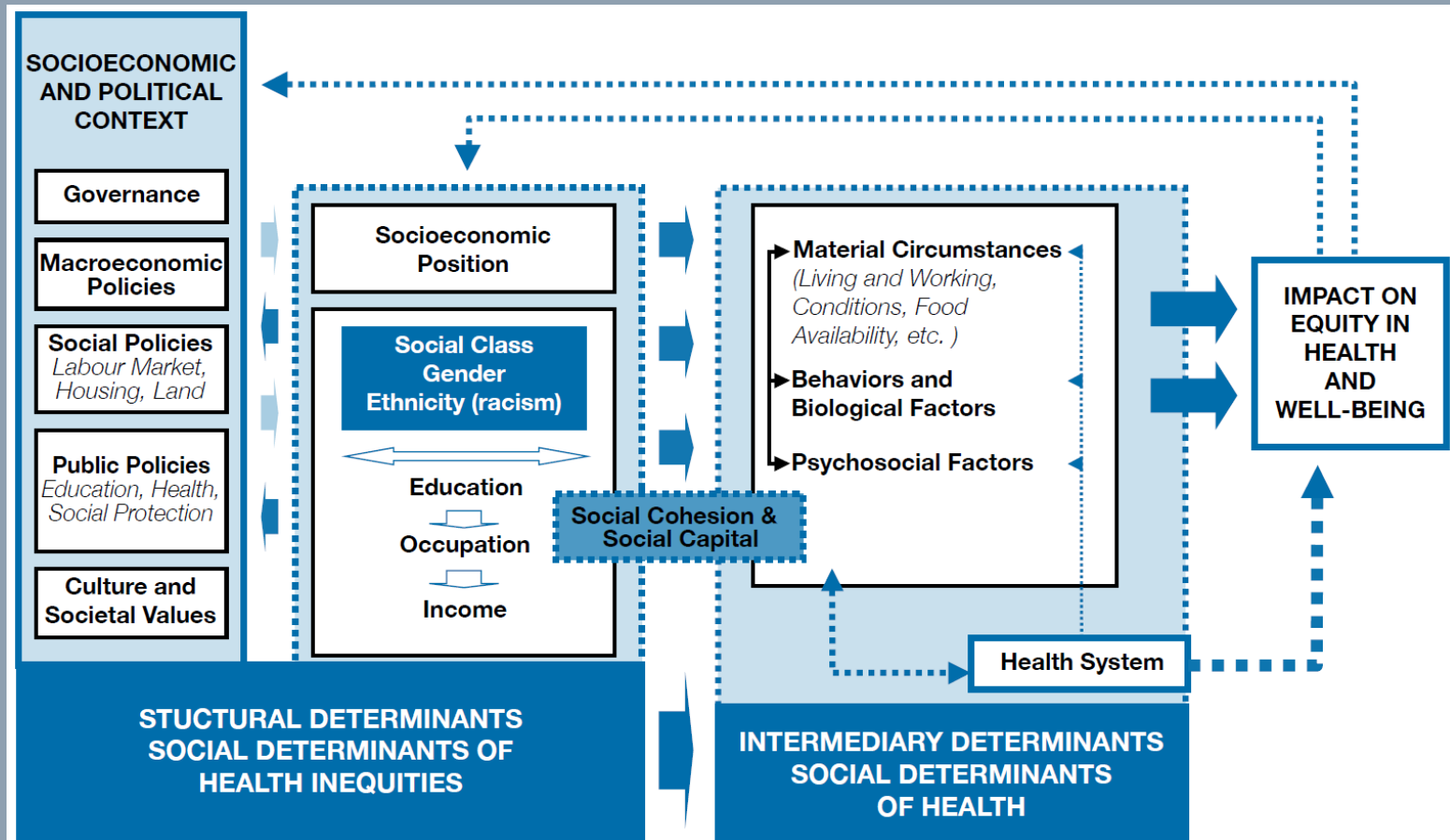
Achieving the Triple Aim

Linking Clinical Health Services and Public Health to
Improve Outcomes and Costs

Congressional Co-Chairs:
The Honorable Joe Heck, DO
The Honorable Ami Bera, MD

**PRIMARY
CARE FORUM**
ROBERT GRAHAM CENTER

WHO Conceptual Model



From: *A Conceptual Model for Taking Action on the Social Determinants of Health*.
Geneva: World Health Organization, 2010

Beyond the Clinical Setting

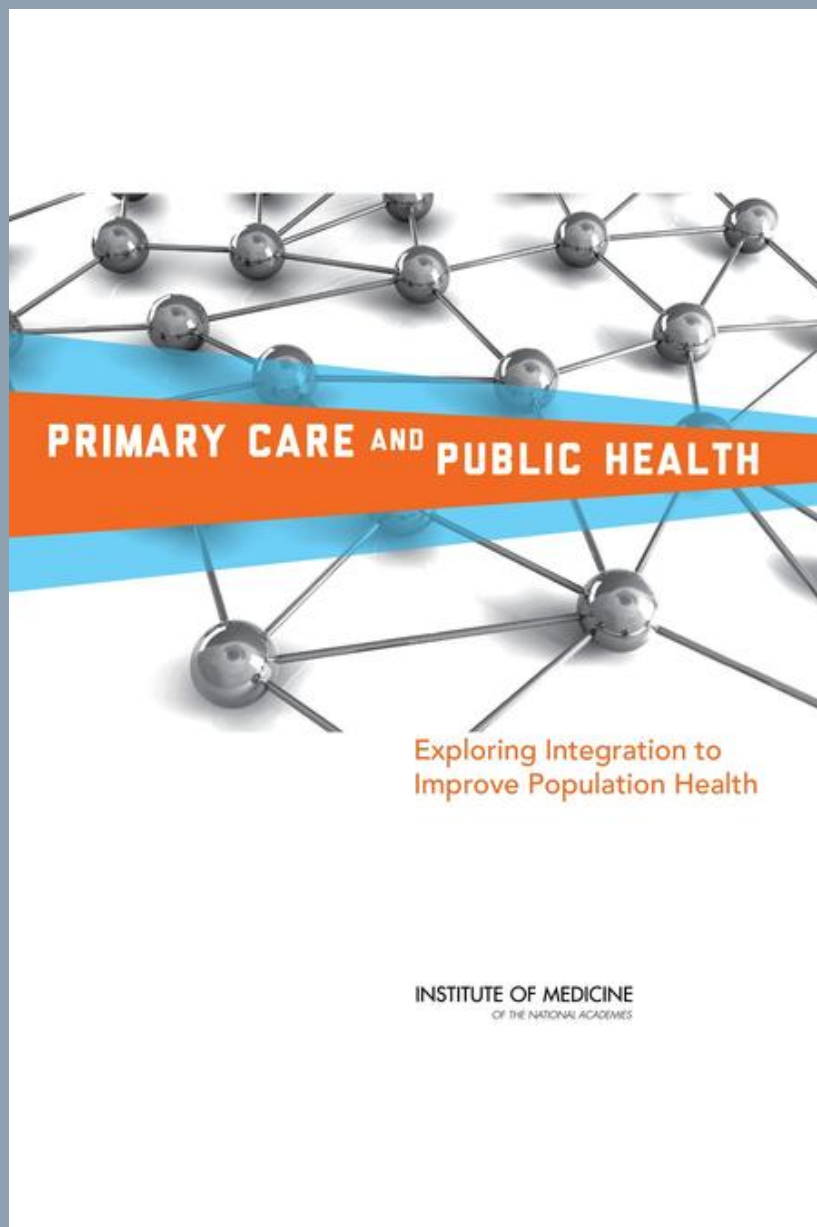


PRIMARY
CARE FORUM
ROBERT GRAHAM CENTER



PRIMARY CARE FORUM

ROBERT GRAHAM CENTER



PRIMARY
CARE FORUM
ROBERT GRAHAM CENTER

[About RWJF](#)[Our Work](#)[Research & Publications](#)

Robert Wood Johnson Foundation

search RWJF

view all: [Grants](#) [Topics](#) [Blogs](#)

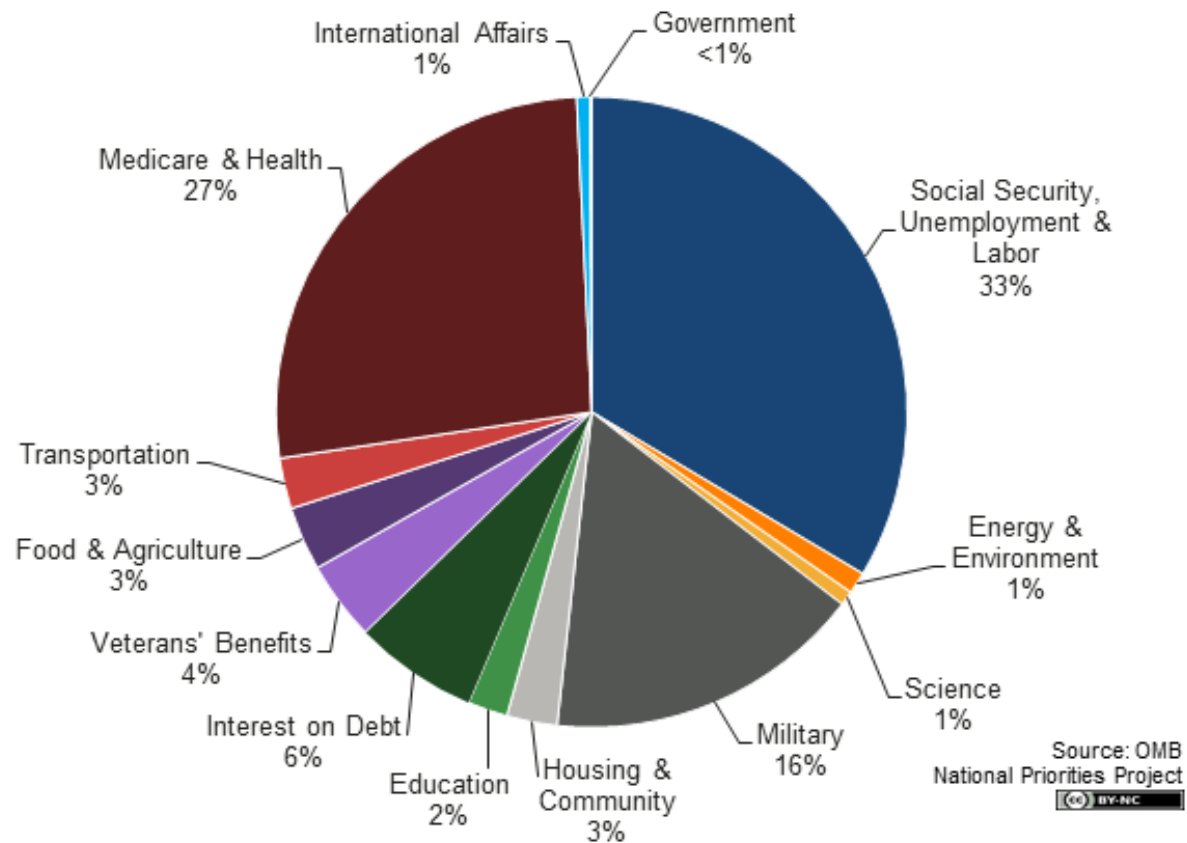
How “Hot Spotting” Cut Health Care Costs by 50%

One doctor in Camden, New Jersey, Jeffrey Brenner, used data to map “hot spots” of health care high-utilizers—one patient had gone to the hospital 113 times in a year—and found a better, cheaper way to treat these costly patients through collaborative care. Brenner’s team was able to reduce hospital visits and costs by 40 to 50 percent.



PRIMARY
CARE FORUM
ROBERT GRAHAM CENTER

President's Proposed Total Spending (Fiscal Year 2015)



Pursuing the Triple Aim

Seven Innovators Show the Way to
Better Care, Better Health,
and Lower Costs

Maureen Bisognano
Charles Kenney



PRIMARY
CARE FORUM
ROBERT GRAHAM CENTER

Speakers

- **Katherine Neuhausen, MD, MPH**
Associate Director, Office of Health Innovation and Assistant Professor, Department of Family Medicine and Population Health, Virginia Commonwealth University
- **Nick Macchione, FACHE**
Deputy Chief Administrative Officer and Agency Director Health & Human Services Agency, County of San Diego, CA
- **Chris Allen, FACHE**
Executive Director/CEO, Detroit Wayne County Health Authority

Reactor

- **Monica Feit, PhD, MPH**
Director, Division of Public Health Services, HHS Office of the Assistant Secretary for Planning & Evaluation